

**Acheson Commercial
Corner
Project Milestones**

Spring 2015

Servicing connection to Parkland County main lines targeted to be complete.

Spring 2015

First phase of business condos targeted to be open.

Spring/Summer 2015

Hotel construction targeted to commence.

Spring 2015

First phase of retail bays targeted to open (leasing negotiations underway - 75% of first phase pre-leased).

Winter 2016

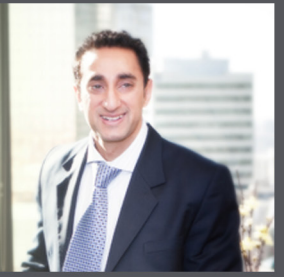
Hotel targeted to open.

Summer/Fall 2016

Target project completion date.

Note: Date ranges are targets and are subject to change, depending on market and construction conditions.

MESSAGE FROM THE CEO



Dear Valued Partner,

Happy New Year! January 2015 has seen some of the most exciting developments on the Acheson Commercial Corner site yet - buildings going up! The concrete foundations for the first 4 buildings (3 retail and 1 commercial condominium) were poured last fall, and this past week we have a crane on site to stand the buildings up. We have lots of pictures on our website and in this Investor Update, as well as video on our YouTube channel.

The recent volatility in the price of oil is a concern, especially for Alberta. However, I want to assure you that our project - and your investment - has been designed to weather the storm. We purchased this land back in 2008, which means we can be more competitive in attracting tenants. We have a diversified business model. We have tenants moving in this Spring, and construction is underway now. We also have cash facilities available to us to ensure continuity of project capital.

Finally, the Acheson Business Park is a great place to do business, and has been very aggressive in luring businesses away from the City of Edmonton and other areas. By Parkland County's estimation, it costs 30% less overhead to do business in Acheson than in Edmonton. This, combined with location and access, ensures that Acheson Commercial Corner is very competitively positioned to attract retail and commercial tenants.

Kind regards,

Zafir Rashid
CEO
Everest Group of Companies

BUILDINGS GOING UP ON SITE

**PHOTOS TAKEN
JANUARY
20-22, 2015**

- Concrete pads poured last Fall
- Hydraulic crane on site January 20-22
- Crane stands pads up, workers guide into place
- Next round of buildings going up February 5



BUILDINGS GOING UP ON SITE



**NEW
DEVELOPMENT
VIDEOS**

**You
Tube** [www.youtube.com/
user/EverestDevGroup](http://www.youtube.com/user/EverestDevGroup)



ENGINEERING UPDATE

Everest is proud to work in collaboration with Oasis Engineering for the Acheson Commercial Corner project. Current engineering updates are:

- Stormwater Management Design Report and Stormwater Management Operations & Maintenance Report Approved in late 2014
- Successful negotiation and execution of Development Agreement with Parkland County completed in late 2014 including tax/levy deferral until sale of parcel.
- Shallow utilities (power, gas) design approval expected mid-February 2015.
- Currently working on submission of Construction Completion Certificates to Parkland County

THE RRSP DEADLINE IS MARCH 2, 2015!



Acheson Commercial Corner is on track to deliver Superior Returns to our investors. Now is a great time to take money out of under-performing mutual funds and stocks and invest in a company with a proven Track Record.

To top-up your existing RRSP, or to open a new RRSP or TFSA account, please contact your advising representative or Zack Siezmagraff, Director of Sales and Marketing, at 780-485-5904 or zack.siezmagraff@everestgroup.ca



We're Listening

Everest is committed to putting Investors First and your feedback helps us improve and enhance the investor experience. Please contact Zack Siezmagraff, Director of Sales & Marketing at zack.siezmagraff@everestgroup.ca or 780.485.5904.